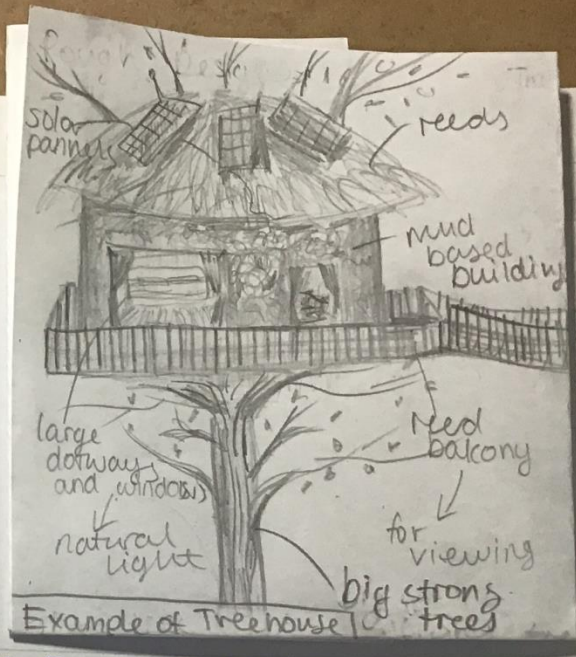
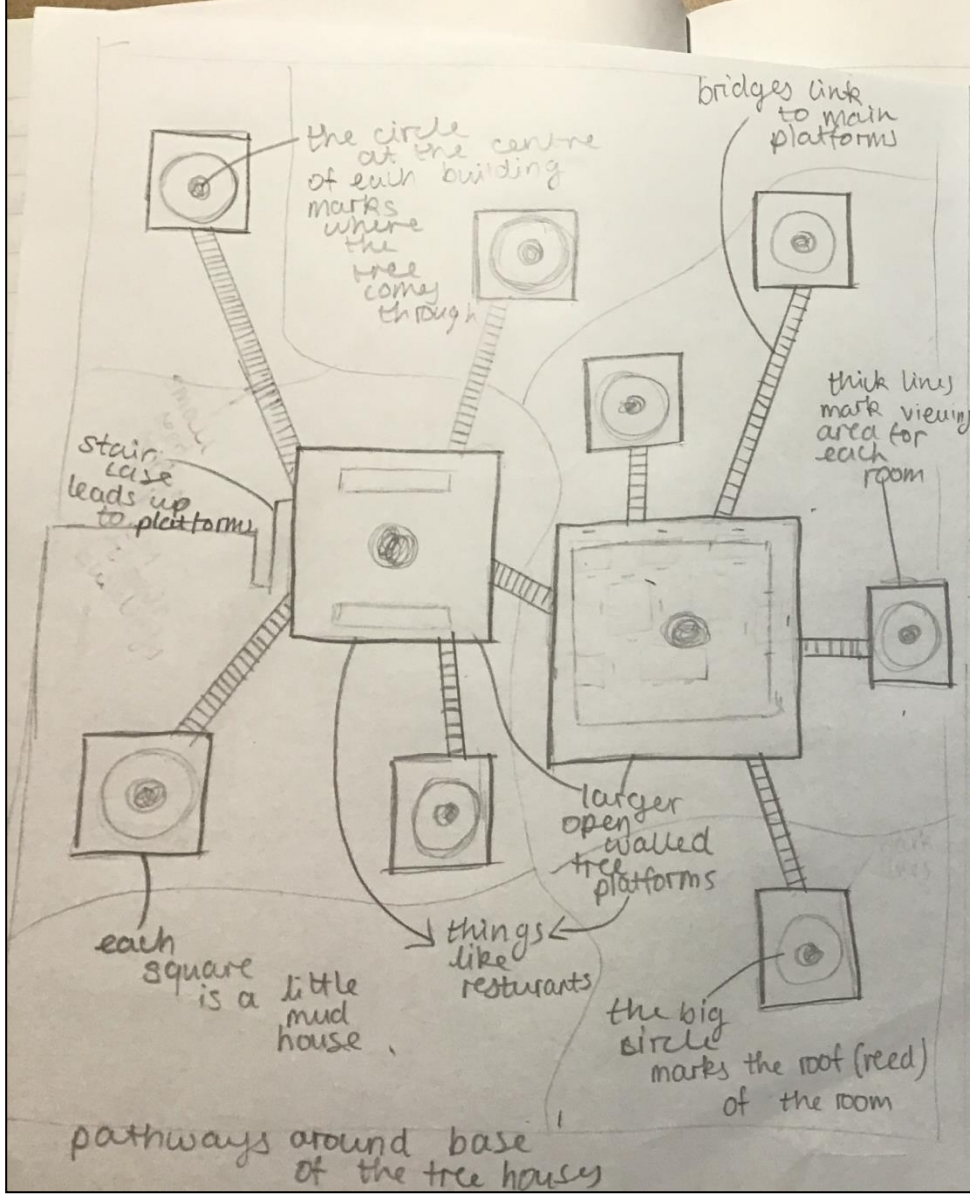


# Year 8 Geography

Design your own ecolodge



My Ecodge: The Treelodge

- This lodge will be located in a forest in the savannah
- They will be made from mud, reeds and deadwood.
- Any trees disturbed will be planted again.
- Large windows for natural light and ventilation.
- Balconys large enough to sit out on.
- Solar pannels on every roof for electricity.
- Water caught in water butts and borehole
- Link with locals: jobs, food, culture
- Everything is reused or recycled
- Sink water used on plants surrounding trees
- Toilet water cleaned in cptic tank
- Safaris - go on horse back only a few cars - don't use these too much
- Vegetable patches - grow own food, waste food used as compost on this
- up high in the trees you have a view above and below
- walkways to see wildlife underneath tree houses
- several of these lodges around savannah - link to name!
- some money goes to the locals

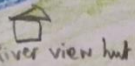


North-facing lodge, great views of the river, calm and isolated with nature. Made from deadwood



Lodge A

This fabulous river contains some amazing birds and animals. Come to our secluded hut to watch!



River view hut

95% of the 16 staff here are local, giving it a homely feel. The cuisine is made by the locals and ~~many~~ most of the furniture are inspired by local designs. They are very helpful and they live about the park. Feel free to ask them anything.

(i) info about activities

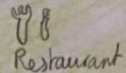


Bridge

WALKING/BIKING TRAIL



bird-watching



Restaurant

Fantastic walk for sight-seers, incredible views. A favourite here at

Lodge B  
Biggest lodge, south-facing with garden. Easy access to paths



Lodge B

Tour Path

Our tour paths are led by locals to educate you about the landscape. We don't want it to be like school though!

Amazing birds migrate here every year. Come here to see thousands of birds

All of our food is made by local chefs to give you the taste of Africa. Delicious!

Lodge C



This secluded yet beautiful lodge gives you a great view of the animals

John's

eco

enterprise

All our materials are locally sourced from deadwood to make your stay as eco-friendly as possible. We use no single use plastics and all our furniture is locally made and inspired. The grey water is used to water the gardens and we treat the black water in a reptic tank.

Some of the activities ~~are~~ here are amazing. We offer lots of oppor for tree planting and gardening. Locals offer tour guides around veld. Walking and horse-riding also popular here. And obviously have small ~~booth~~ huts where you can spot the big 5!

But in a old chalk quarry so we didnt have to cut down any trees.

# Locals Lodge

located in the Lowveldt  
So as to destroy as little  
greenery as possible  
but grow it.

tree planting  
good for the  
environment

solar panel  
powering and heating  
shower

dead wood  
and built locally  
to give jobs

Solar panels for  
sustaining electricity

canvas tents  
to keep away  
mosquitos  
made by locals

locally made  
furniture

fence  
to keep  
away  
predators

local recipes  
with local chefs  
no also make some  
European food

food waste  
used as compost

grey water used  
to water trees  
and plants

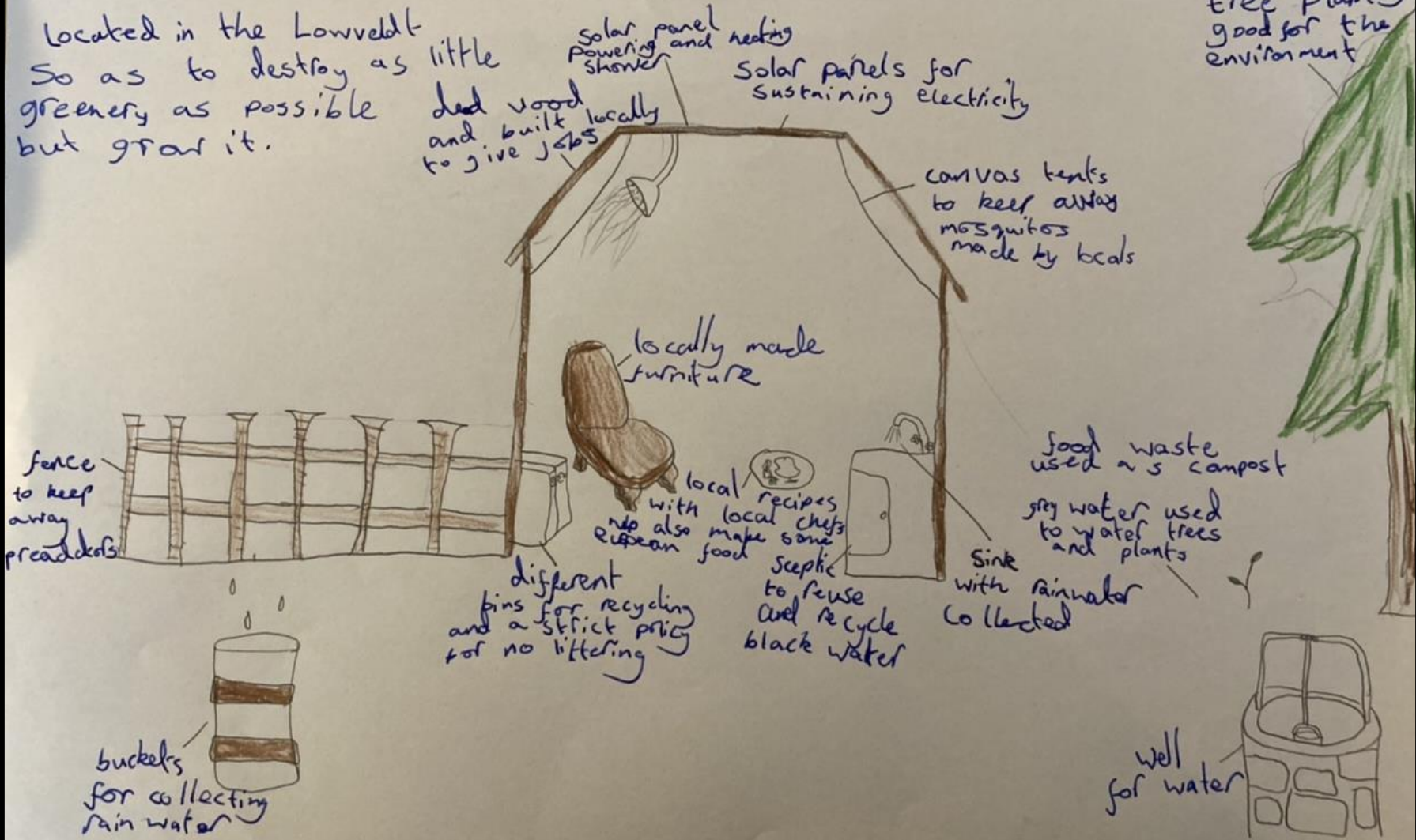
different  
bins for recycling  
and a strict price  
for no littering

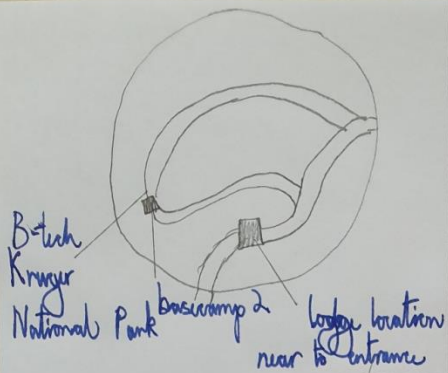
septic  
to reuse  
and recycle  
black water

Sink  
with rainwater  
collected

buckets  
for collecting  
rain water

well  
for water

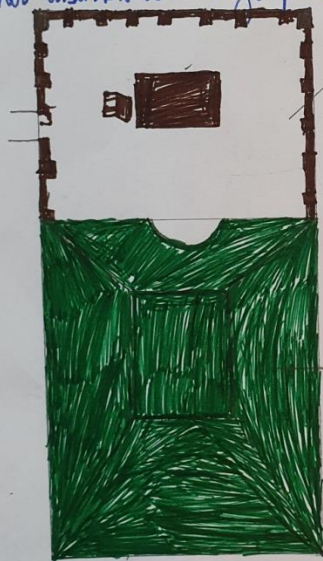




Park located in the <sup>highveld</sup> ~~highveld~~ ~~lowveld~~ <sup>forming</sup>  
 South  
 Single waste plastic is banned

The too

Water supply is borehole (that won't stand out)  
 dirty water and human waste will be ~~be~~ distributed to a treatment centre  
 and distributed through plumbing, underground.



viewing balcony

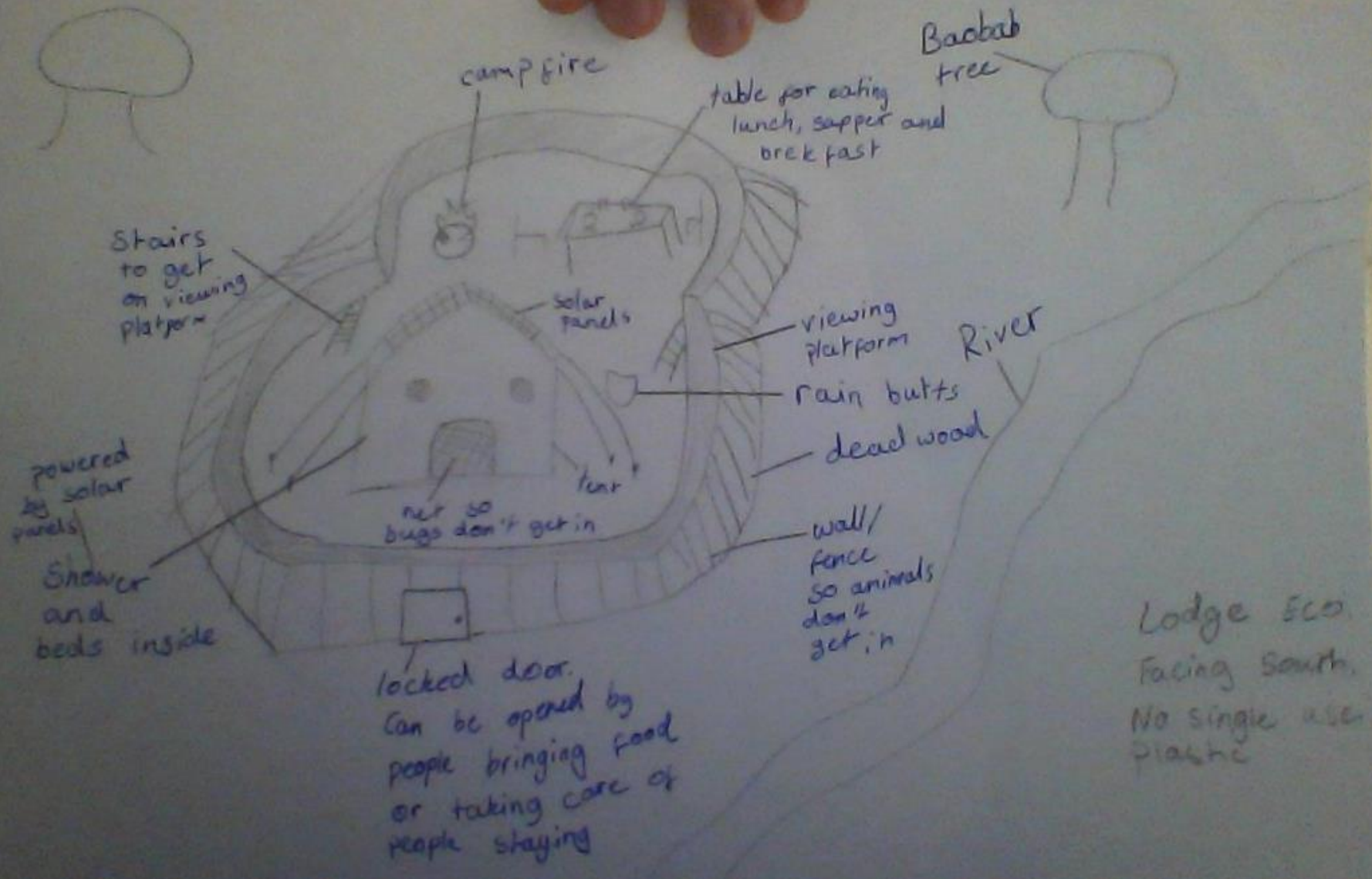
(disguised into wilderness as to  
 not interfere with wild life ~~area~~)

half tent

for sleeping and protection, the tent is insulated  
 all year round.

The lodges would be made of cane, ~~and~~ the <sup>polyester</sup> ~~cotton and nylon~~ to

Additionally they will be made in a <sup>make the tent</sup> ~~greenfield~~ site to blend in but the trees that <sup>waterproof.</sup>  
 are cut down will be less than ~~the~~ <sup>the</sup> trees planted



Baobab tree

camp fire

table for eating lunch, supper and breakfast

Stairs to get on viewing platform

solar panels

viewing platform

River

rain butts

dead wood

powered by solar panels

Shower and beds inside

net so bugs don't get in

door

wall/fence so animals don't get in

locked door. Can be opened by people bringing food or taking care of people staying

Lodge Eco. Facing South. No single use plastic