

**Rose  
Bruford  
College**

# Cannot Come to Good

Created by  
MA Collaborative Theatre Making

10 – 11 June 2023  
The Cockpit



# Cannot Come to Good

Created by MA Collaborative Theatre Making

Programme Director **Yael Shavit**

Lighting Designer **Laurie Loads**

Lighting Designer **Lib Lobberson**

Sound Designer **Roddy Lynch**

---

We started with Shakespeare's *Hamlet*, a piece of work that has had huge cultural impact in this country, and explored what our place as individuals is in this history.

What does it bring up for us today?

How can we rediscover the world and experience of *Hamlet*, through our own eyes in today's context?

Having rediscovered the way in which every character and moment in *Hamlet* is somehow "on hold", we decided to spend time in this "held" space, and discover its relationship to us and to theatre.

We held this rehearsal room creatively developing a personal take on the characters. All our characters are in a metaphorical waiting room, stuck in one way or another.

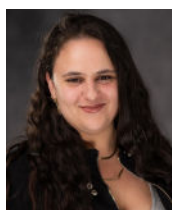
This show is a mix of individual and collective work and we hope you enjoy the outcome.

Company Note

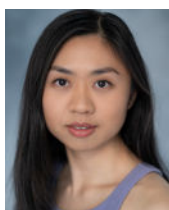
---

## The Company

---



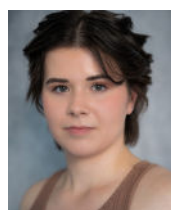
**Crystalia  
Varelis**



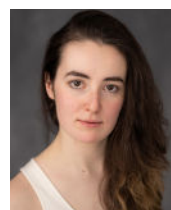
**Stephanie  
Renae Lau**



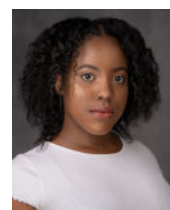
**YY  
Yong**



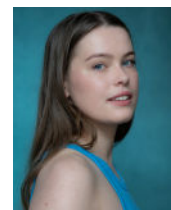
**Ella  
Daly**



**Ioana  
Pitic**



**Marla C.  
Norbrooke**



**Helene  
Angell**

## Production Team

---

Creative Facilitator **Philip Arditti**

Creative Facilitator **Nina Bowers**

Creative Facilitator **Myriam Angela**

Production Stage Manager & Costume Facilitator **Victoria Shannon**

Assistant Stage Manager **Alice Bishop**

Movement Direction **Line Guld Hedegaard**

Design Facilitator **Caitlin Mawhinney**