

A young woman with long, wavy brown hair tied in a bun, wearing black-rimmed glasses and a black top, is sitting at a desk. She is holding a black pen and writing in a notebook. A laptop is visible on the left side of the desk. The background is a blurred indoor setting with warm lighting.

**BROMLEY HIGH SCHOOL**

**SIXTH FORM**

# WELCOME

---



Our Sixth Formers are ambitious, aspirational, motivated and independent. We want you to know your own mind, take responsibility for your actions, work hard and have fun. Most importantly, we want you to be happy and this is why well-being and pastoral care is such an integral part of the Sixth Form here.

Moving into Sixth Form is an exciting and challenging time. It is an opportunity to reach out and make new friends, try something completely new, and make a fresh start.

Through our tailored individual support, we encourage you to achieve your best academically but also to be aspirational and to achieve your dreams. So whether you plan to study Engineering or Classics at a Russell Group university, apply to Oxbridge, study in the U.S., take an Art Foundation course at Central St Martin's, or pursue a highly competitive, but increasingly popular, degree apprenticeship with a global company such as PWC, we will help you get there.

Our vibrant Sixth Form is large enough to offer you a broad selection of A Level courses, expert staff, and

a regularly updated selection of electives. We offer you a series of 'Future Focus' events designed to develop the 'soft skills' necessary for the modern workplace as well as a huge careers convention, gap year talks, apprenticeship events, and focused careers workshops and panels. As part of the GDST family we are larger still, with networking, mentoring and career opportunities reaching far beyond the confines of any one School.

However, we are small enough to build the curriculum around you rather than confine your choices to option blocks, offer you capped class sizes so that you can make real progress, and of course, the teachers and advisors here are able to really get to you know you well.

Choosing a Sixth Form is an important decision. You are most welcome to come and visit us, join us for a taster day but crucially, please speak to our existing students.

I wish you the best in your decision-making and hope to see you next year.

**CHRISTINA BIRD**  
**HEAD OF SIXTH FORM**







“ PUPILS TAKE  
RESPONSIBILITY FOR  
THEIR LEARNING SERIOUSLY,  
PARTICULARLY NOTABLY  
IN THE SIXTH FORM. ”

ISI INSPECTION 2016



Our specific support consists of:

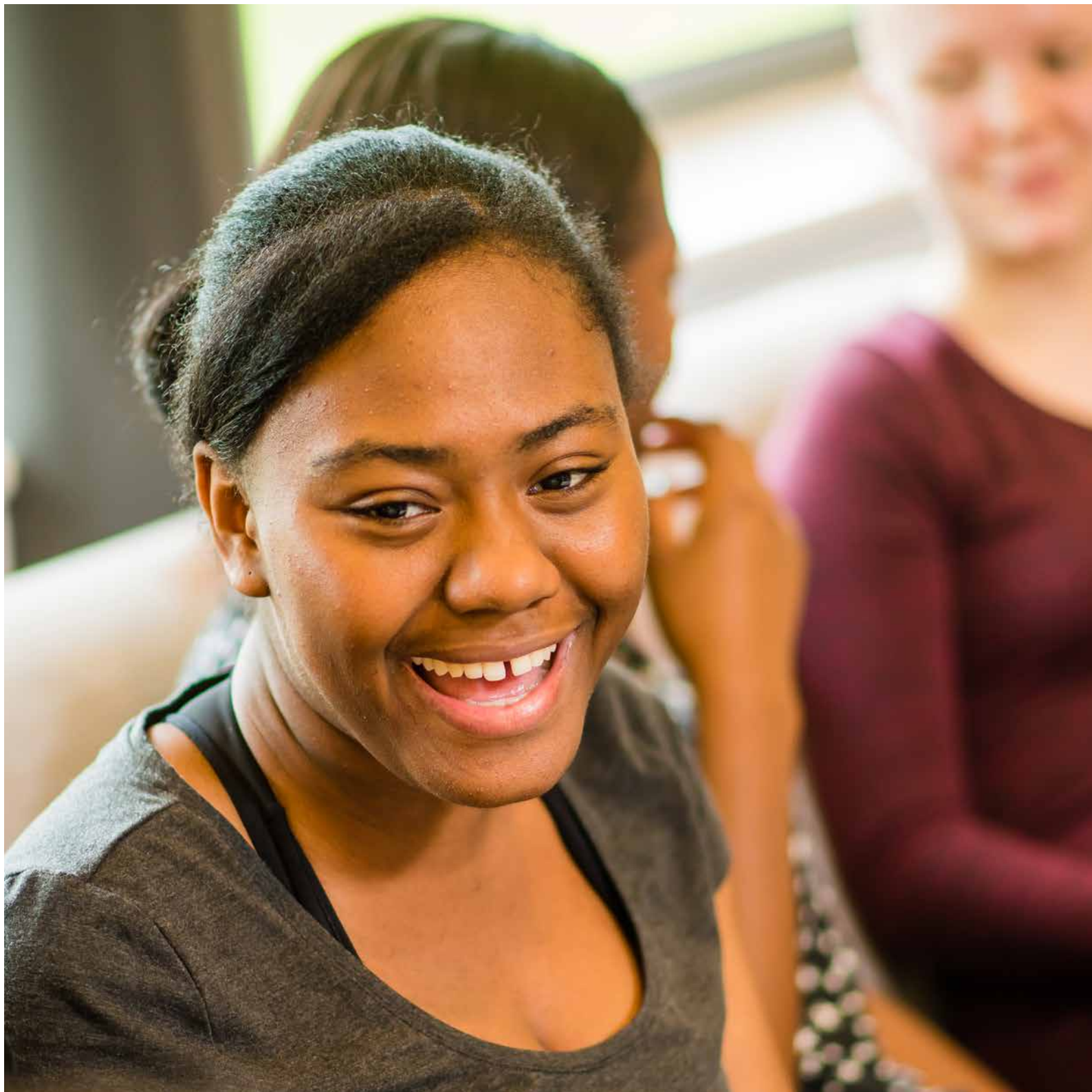
- Excellent subject teaching by experienced staff – the recent ISI inspection graded teaching as ‘excellent’ and pupil achievement as ‘exceptional’
- Regular one to one tutorials with your tutor
- Academic target setting and progress reviews
- Extension sessions, societies and conferences offered by subjects to enhance learning and prepare for university entrance by looking at topics not on the syllabus
- Academic extension through high-profile speakers. Recent speakers have included Professor Deborah Lipstadt, Terry Waite and Lucy Worsley
- Subject clinics
- Development of study skills and time management through the A Level Mindset tutorial programme
- Use of dedicated Sixth Form study area



On the first day of term the whole year group takes part in a challenge activity in Central London which is great fun and an excellent opportunity to bond with your new form.

During the first two weeks you will participate in the Inspire East Conference at Churchill College, Cambridge University along with three other GDST Schools where you will hear from some inspiring speakers.

As part of the Sixth Form at Bromley High, you will be pastorally supported by your own personal tutor as well as the Head of Sixth Form and Head of Careers and your various subject teachers. It is important however, as you move towards adulthood and greater independence that you begin to take responsibility for your own well-being. The Future Focus Programme will help you to develop these skills and greater self-awareness, addressing topics such as budgeting for university, living independently and many more.







Our current list of A-level subjects are:

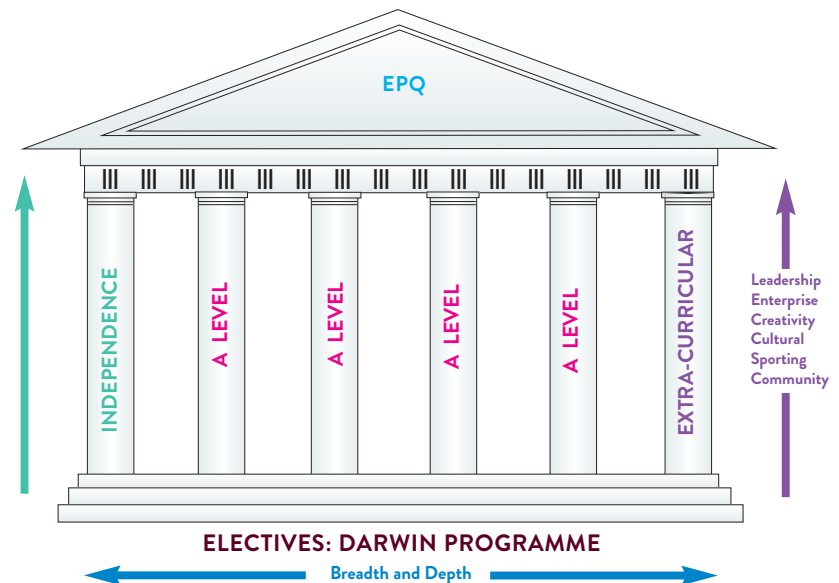
- Art
- Biology
- Business Studies
- Chemistry
- Classical Civilisation
- Computer Science
- Dance
- Design Technology
- Drama
- English
- Economics
- French
- Geography
- German
- History
- Latin
- Mathematics
- Further Mathematics
- Music
- Music Technology
- PE
- Physics
- Photography
- Psychology
- Philosophy and Ethics
- Spanish





The EPQ is a research based qualification comprising of a single extended piece of work on a topic of their choice which requires a high degree of planning, preparation, research and autonomous work, providing valuable additional evidence for entry to higher education.

EPQ stands for Extended Project Qualification, and is the equivalent of an AS grade, but has the added advantage of being able to obtain the A\* grade. It is a qualification highly prized by universities.





# LEADERSHIP OPPORTUNITIES

---

The Head Girl Team, comprising the Head Girl, two Deputies and several Senior Prefects, is elected in January of the Lower Sixth. Every girl is encouraged to outline her aims for the school at the Hustings before votes are cast. House Captains are elected at the same time and are vital in fostering a school spirit and inter form competition. The Head Girl meets with the Headmistress every week and she and her deputies chair the School Council giving the Sixth Form a powerful voice in the management and direction of the school.



- Mentor younger years as part of the Big Sister programme
- Gold Duke of Edinburgh expeditions in challenging terrain
- Whole Challenge expeditions, most recently to Madagascar and soon Cambodia and Laos
- Academic Prefect
- Sports Captain
- Debate Captain
- Charity Prefects
- Eco Reps
- Careers Prefect
- ICT Prefect
- Music Prefect
- A member of the GDST school council

Each new Sixth Form year group brings fresh ideas as girls initiate new clubs and societies to reflect their own enthusiasms and passions.



The Sixth Form is a chance for students to continue to develop their broader education: to be exposed to a wider range of skills and experiences that will prepare them for lifelong learning beyond the confines of their chosen specific academic disciplines. Thus the Darwin Programme of electives offers students a chance to study a range of academic, cultural and practical activities such as: debating, anthropology, current affairs, architecture, digital photography, putting on a Sixth Form production, analysing 'bad science' or community work at schools for children with learning difficulties and a local residential home.

- Athletics
- Art Drop-in sessions
- Badminton Club
- Biology Journal Club
- Café Scientifique
- Chamber Strings
- Chess Club
- Christian Union
- Classics Society
- Conducting
- Creative Photography
- Dance
- Debating
- Drama Club
- DT Award Scheme
- Football
- French, German and Spanish Film Societies
- Fun Run Club
- GCSE & A Level Choir
- General Knowledge Team
- Geography Society (Geog Rocks)
- Gym Club
- Hans Woyda team training for Maths
- HarmoniX
- History & Politics Society
- Hockey
- International Music Tour
- Knit & Natter
- LGBTQ+ Discussion Group
- Mathematics Society Career Talks
- MDV Society (Medics, Dentists and Vets)
- Netball
- Orchestra
- Percussion Ensemble
- Philosophy and Ethics Society
- Pocoflutes run by 6th form
- Puzzle Club for Maths
- Rock Band
- Theatre Society
- X-Country





These are some of our most recent destinations in addition to the Gold Duke of Edinburgh Award and exotic expeditions with Outlook Expeditions.

- Performing Arts tours to New York, Los Angeles and Prague
- Berlin with History, Politics and German
- Iceland and Dorset with Geography
- CERN with Physics
- San Francisco with Economics, Business and Computing
- Paris with French
- Skiing in Canada and the USA
- Poland with History and Politics
- Madrid with Spanish
- Somerset with Biology
- Rome with Classics

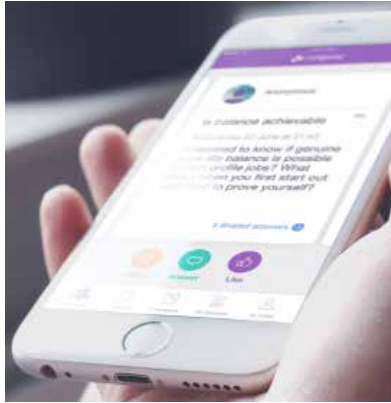
ISI INSPECTION 2016





*ISI INSPECTION 2016*

- Individual interviews with the Sixth Form Team leading to detailed and individualised support for your UCAS application
- Access to rigorous and successful reference writing system which accurately reflects current trends in university entrance demands
- A visit to a UCAS Exhibition
- Tailored Oxbridge programme of support including interview and entrance test preparation, college choice and visits.
- Medical, Dentistry and Veterinary Programme providing specific support and advice with UKCAT and BMAT entrance tests as well as interview practice, including a practice interview with an Imperial College Admissions Tutor and Multiple Mini Interview scenarios
- Opportunities to connect with Bromley High and GDST alumnae
- Unifrog – package of giving up-to-date, neutral information about university, careers and apprenticeships
- Expertise in applications to US and European universities. Recent successful entries include Yale and Princeton
- Expertise in Apprenticeships e.g. holding an Apprenticeship Insight Event in May 2019
- Huge bi-annual Careers Convention with 40+ speakers
- Higher education evening for you and your parents
- Expert advice from university admission tutors on how to write a personal statement
- Training sessions in ‘soft skills’ such as networking, presentation skills and building an online profile



## GOOD SCHOOLS GUIDE

Bromley High School is part of the GDST (Girls' Day School Trust). The GDST is the leading network of independent girls' schools in the UK, with nearly 4,000 staff, and 20,000 pupils and 26 schools. Founded in 1872, the GDST has a proud history of pioneering innovation in the education of girls, and is the largest single educator of girls in the UK.

The GDST is an extraordinarily effective network for innovation in teaching and learning and for the sharing of best practice whether it is excellence in hockey, Oxbridge Entrance or Career Networking with its alumnae network of 65,000 women.

This year we were delighted to introduce our 6th formers to Rungway – a new mentoring app which allows GDST sixth formers to connect with GDST alumnae and staff. At the touch of a button, our 6th form is now able to ask any questions they may have about study and life after school, university courses and choices, getting insights into career options, learning about different routes into the workplace, or asking about internships and work experience. Equally, it could be used for general queries around CV presentation or interview. Another example of how Bromley High girls can tap into the vast and supportive GDST network.

All sixth formers gain a lifelong membership to the GDST Alumnae Network of 65,000 women in every profession, many of whom are in eminent positions. They may be able to provide you with work experience placements in the near future or professional contacts later in your career. You will also have access to exclusive GDST Careers Insight Days featuring illustrious companies such as: PwC, Nomura, Gardner Theobald, HSBC, BDO, Rolls Royce, Ericsson, Aberdeen Asset Management, Royal Opera House, Facebook and Barclays.





“ THE SCHOOL HAS AN  
EXCELLENT RANGE OF  
RESOURCES IN ALL AREAS  
WHICH PROVIDE INSPIRATION,  
FACILITATE HIGH-LEVEL STUDY  
AND INCLUDE DIVERSE WAYS  
TO SCHOLARSHIP ”

ISI INSPECTION 2016



ISI INSPECTION 2016



ISI INSPECTION 2016











**BROMLEY**  
HIGH SCHOOL

GDST  
GIRLS' DAY SCHOOL TRUST

BLACKBROOK LANE, BROMLEY, KENT BR1 2TW

TEL. 020 8781 7000 – EMAIL. [BHS@BRO.GDST.NET](mailto:BHS@BRO.GDST.NET) – WEB. [WWW.BROMLEYHIGH.GDST.NET](http://WWW.BROMLEYHIGH.GDST.NET)

